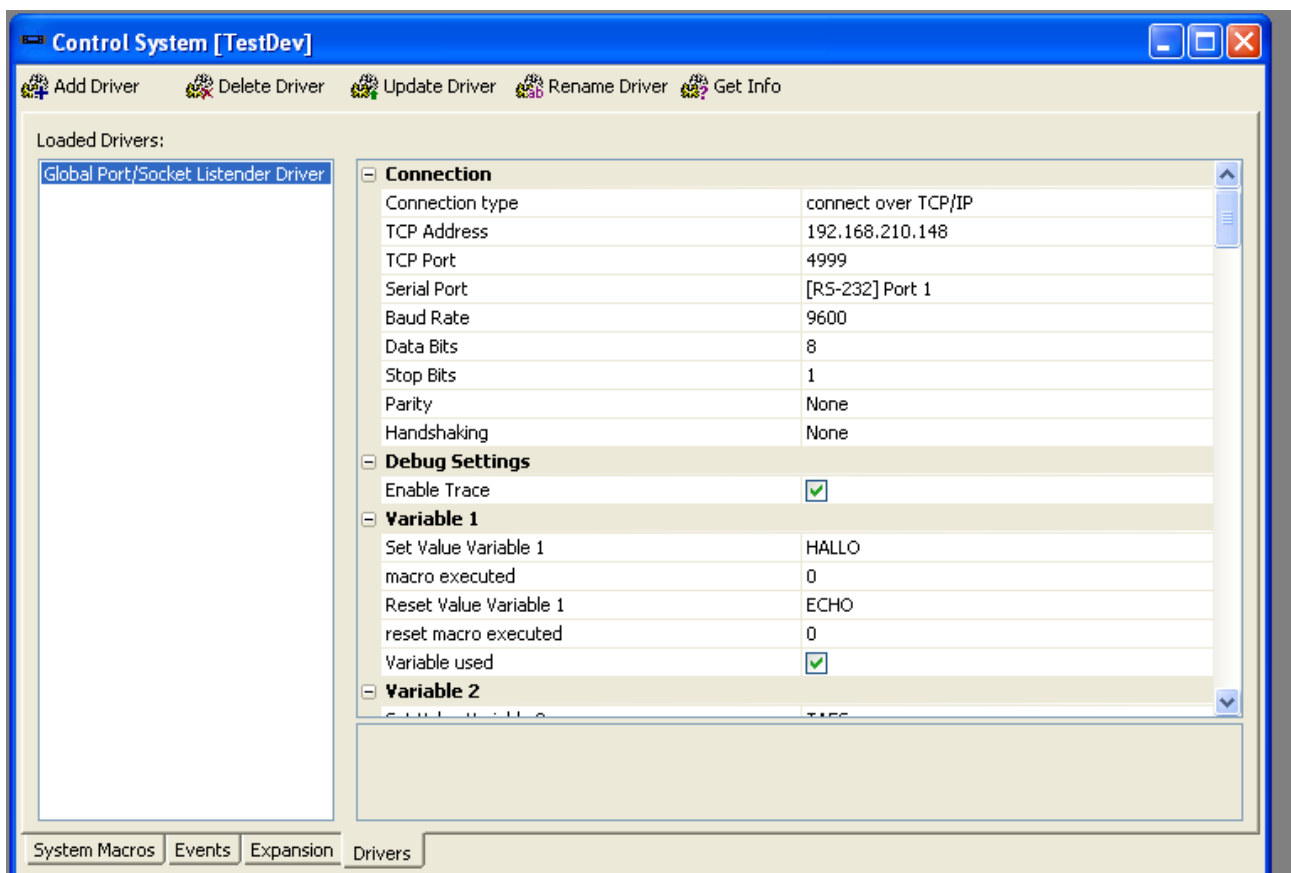


Install Instructions for the global listener driver

This driver is an extension to the socket driver written by Philippe Ponte, it used the same basics, but while the original driver only sends a string to a TCP/IP Address this driver listens to a socket to a TCP/IP Address or the RS232 Interface.

After you have installed the driver on your RTI- device (for example an XP- 8) you have to make some configurations.



In the Connection Part you can choose which port you will listen to RS232 or you can define a TCP – IP Address and port.

You have 25 variables you can make some definitions.

Every variable has to parameters the set and the reset value which can be defined with a string.

If one of those Strings will be received as the data sent to the XP8 the boolean value for this variable (Flag Variable X) will be true (if set value occurs) or the value will be false (if reset value occurs).

Also you can define macros, which should be executed, then you should enter the number of the system macro in the corresponding field.

Every variable which should be evaluated, you have to activate the check box variable used.