

# QUICK START GUIDE - for Midra™ series

## Shot Box<sup>2</sup> - Ref. SB80-2



ANALOG WAY®  
Pioneer in Analog, Leader in Digital

### WHAT'S IN THE BOX

- 1 x **SB80-2 Shot Box<sup>2</sup>**
- 1 x Carrying case
- 1 x USB stick containing both the Windows and MAC OS setup applications\*
- 1 x Quick start guide for LiveCore™ series\*
- 1 x Quick start guide for Midra™ series\*

\* The quick start guide and the setup applications are also available on [www.analogway.com](http://www.analogway.com)

### SYSTEM REQUIREMENTS AND LIMITATIONS



**Windows:** Microsoft® Windows® 7 or above, 50 MB of available hard-disk space for installation. LAN connection



**Mac OS:** Mac OS v10.7 or above, 50 MB of available hard-disk space for installation. LAN connection

**Important:** The **RCS<sup>2</sup>** software can only connect one single **Shot Box<sup>2</sup>** device at a time.

### QUICK INSTALL AND SETUP

#### • Installing AW Box Controller on Windows

Plug the USB stick provided with the package then locate the **AW Box Controller** installer for Windows (the file name is **SetupAWBoxController\_<version>.exe**). You can also download the latest updates from the product download area on [www.analogway.com](http://www.analogway.com). Double-clicking this file will launch the installer that will install **AW Box Controller** on your system.

#### • Installing AW Box Controller on Mac OS

Plug the USB stick provided with the package then locate the **AW Box Controller** installer for Mac OS (the file name is **SetupAWBoxController\_<version>.pkg**). You can also download the latest updates from the product download area on [www.analogway.com](http://www.analogway.com). Double-clicking this file will launch the installer that will install **AW Box Controller** on your system.

#### • Configuring AW Box Controller

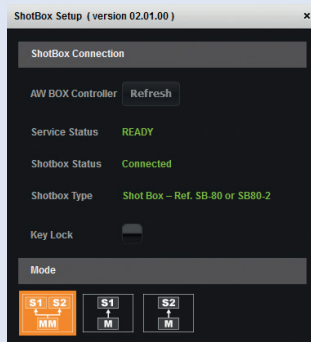
Plug your **Shot Box<sup>2</sup>** into the USB port and wait for your system to recognize it. When you plug a **Shot Box<sup>2</sup>** into a Mac for the first time, the Keyboard Setup Assistant will launch automatically. Close this assistant to continue. When ready, start the **AW Box Controller** application:

The application will try to detect and connect the **Shot Box<sup>2</sup> (SB80-2)**. It may take a few

seconds for the application to succeed. In case of failure, **AW Box Controller** indicates an error and will attempt to reestablish a new connection with the device(s) once every 3 seconds. When detected, the application indicates the type of controller(s) connected and let you adjust the LED backlight intensity.

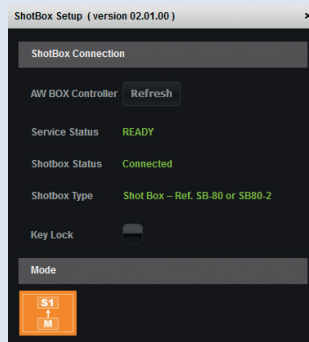
Click **Midra™** then start the **RCS²** application. When ready, connect your **Midra™** device as usual. The **RCS²** application will automatically try to communicate with **AW Box Controller**. When properly connected, the **RCS²** application briefly displays the type of Box connected as well as the selected layout option.

Click this area to display the **Shot Box²** settings box:



Matrix mode

OR



Mixer/Quadravision mode

You can also temporarily disable the **Shot Box²** keys by checking the box **Key Lock**.

If your **Midra™** device is configured in Matrix mode, you can configure the **Shot Box²** either to recall presets from Master Memory (two screens simultaneously) or to recall presets from Memory (Screen 1 or Screen 2 only).

## RUNNING SHOT BOX<sup>2</sup> FOR MIDRA™ SERIES

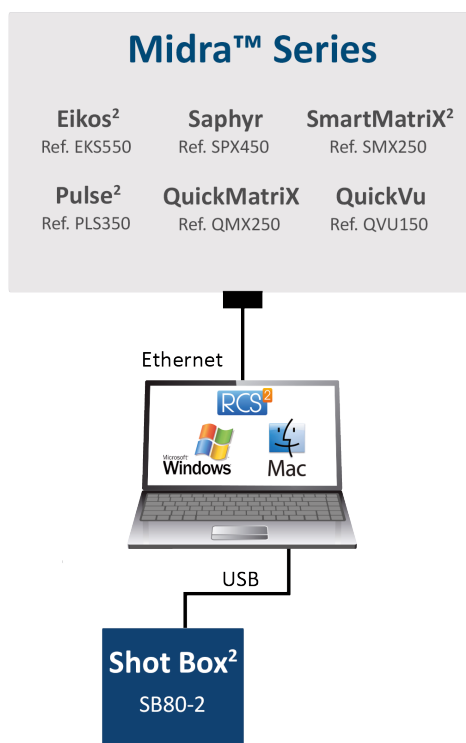
Once the **RCS<sup>2</sup>** application is properly connected to **AW Box Controller**, each individual key LED backlight will reflect the corresponding preset availability on the system: If a preset key backlight is turned off, this means that the corresponding preset memory is empty. The **Shot Box<sup>2</sup>** supports up to 64 presets (preset keys 65 to 70 and monitoring preset keys are always disabled and reserved for LiveCore™ series). For more information about presets, please refer to your **Midra™** product manual.

To recall a preset on your Preview monitor, press the corresponding key on your **Shot Box<sup>2</sup>** device. The key backlight starts blinking.

To send the current Preview configuration to the Program output, press the **TAKE** key on the **Shot Box<sup>2</sup>** device.

The preset key illuminates in contrasting color after the **TAKE** to indicate that this preset has been selected on program.

## DIAGRAM



## TROUBLESHOOTING SHOT BOX<sup>2</sup> FOR MIDRA™ SERIES

Should you encounter difficulty with **RCS<sup>2</sup>** application or with **AW Box Controller**, you may contact our technical support department at [techsupport@analogway.com](mailto:techsupport@analogway.com).

## WARRANTY CONDITIONS

This product has a 1 year warranty on parts and labor, back to factory. This warranty does not include faults resulting from user negligence, special modifications, electrical surges, abuse (drop/crush), and/or other unusual damage. In the unlikely event of a malfunction, please contact your local Analog Way office for service.